

MANUAL/HYDRAULIC  
SCREEN CHANGERS  
PRODUCT SELECTION  
GUIDE



1-800-457-7550

1634 Tate Blvd. S.E., Hickory, NC 28602 USA  
Tel.: (828) 326-9888 / Fax: (828) 326-8882



The line of Manual Screen Changers was designed using finite element modeling, insuring leak-free operation up to **10,000 psi** — guaranteed!

Designed and manufactured by Dynisco in the U.S., these screen changers feature a patented pressure activated seal that allows processing of polymers up to 850°F. The seals are designed to be accessible through the slide plate opening, allowing service with no machine disassembly.

Another feature of the Manual Screen Changer is its unique multi-position handle design. This safety and convenience feature helps avoid interferences and allows better operator access to the screen changer.

Available close-coupled extruder connections are cost-efficient and save processors money by eliminating c-clamp costs. Same day delivery is available with customer-supplied adapters.

The Manual Screen Changer is suitable for virtually any extrusion process that can tolerate a momentary shutdown to change screens.

Six manual screen changer models are available from 1" through 4.5" (25mm – 120mm), all with the capability of pulling the extruder screw through the screen changer while mounted on the barrel.



**Features:**

- Multi-position handle
- Major components designed by finite element modeling
- Patented pressure activated seal
- Standard machines in stock
- Close-coupled extruder connections available
- Six models available from 1" through 4.5" (25mm–120mm)
- Designed and built in the U.S. by Dynisco

**Benefits:**

- ✓ Avoids interferences and provides better operator access
- ✓ Cost-efficient design guaranteed for leak-free operation up to 10,000 psi
- ✓ Allows leak-free processing from 0–850°F
- ✓ Same day delivery available
- ✓ Adapters are cost-efficient and designed for optimum flow rheology. Thread-on adapters are available, eliminating c-clamp costs
- ✓ Extruder screws may be pulled through the screen changer while mounted on the barrel
- ✓ Unmatched price, delivery, and after sales service

**EH HYDRAULIC SCREEN CHANGER**

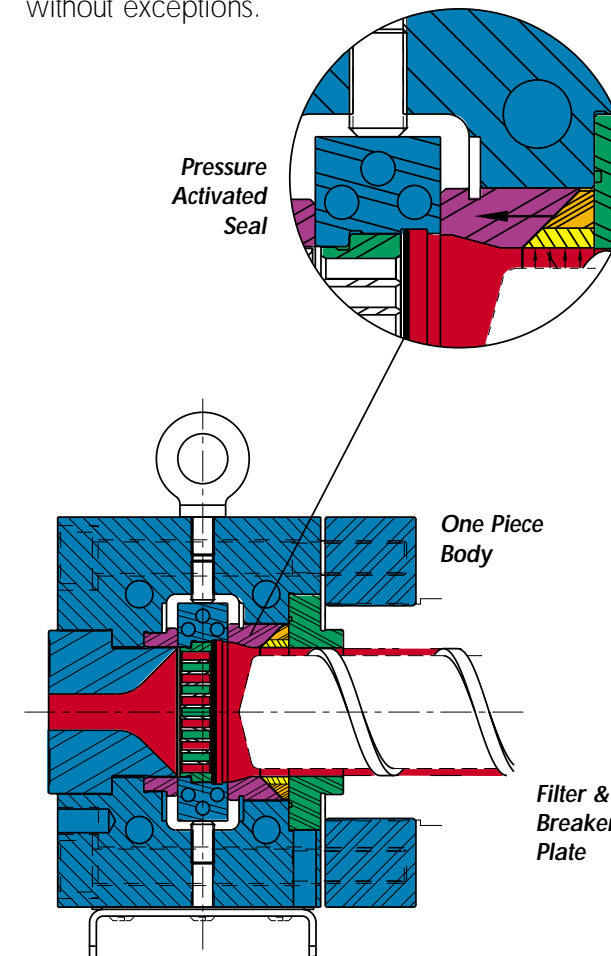
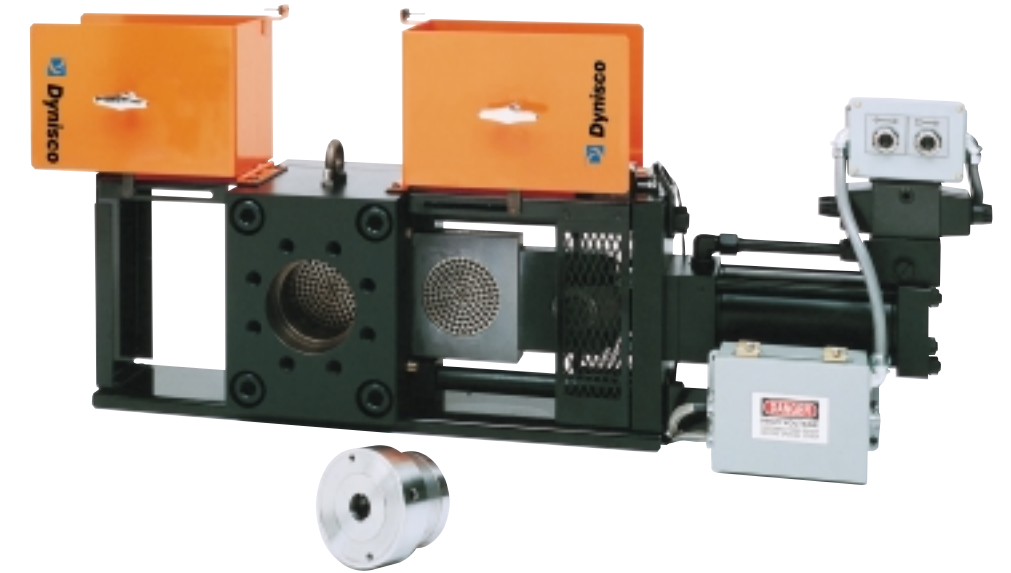
The EH Hydraulic Screen Changers were designed with the most impressive list of features available.

Designed using finite element modeling for operation up to 10,000 psi, pressure drops to 3000 psi and processing temperatures up to 850°F.

Close coupling to the extruder is available with the standard bolt through extruder connection.

The EH screen changer comes fully assembled, pre-wired and requires only a single temperature control zone.

Dynisco provides full time, total support — without compromise, without exceptions.



**Features:**

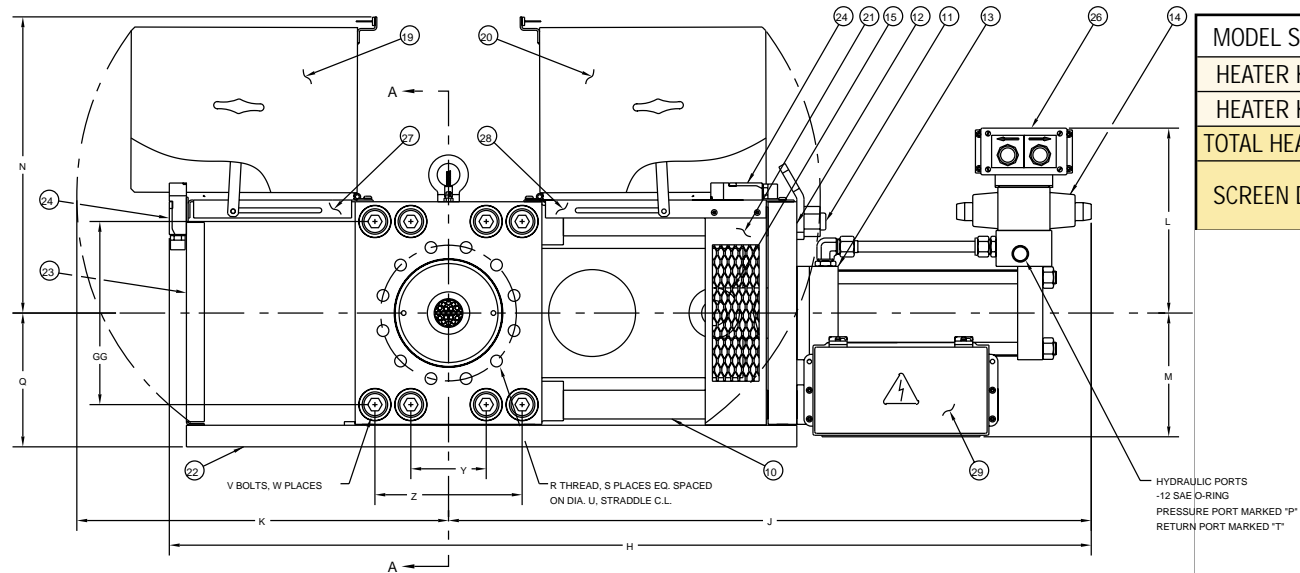
- Bolt through extruder connection standard
- Finite element modeling
- Pressure activated seal
- New breaker plate
- Tamper resistant safety switches
- Four hydraulic EH Screen Changer models available from 2.5" to 6.0"
- Complies with NFPA-79 and European CE specifications

**Benefits:**

- ✓ Easier installation better sealing with improved reliability
- ✓ Cost-efficient design for operation up to 10,000 psi and pressure drops to 3000 psi
- ✓ Allows leak-free processing from 0–850°F
- ✓ 24% more screen area and improved retention
- ✓ Safety
- ✓ Extruder screw may be pulled through the screen changer while mounted on barrel
- ✓ Standard unit designed for worldwide use

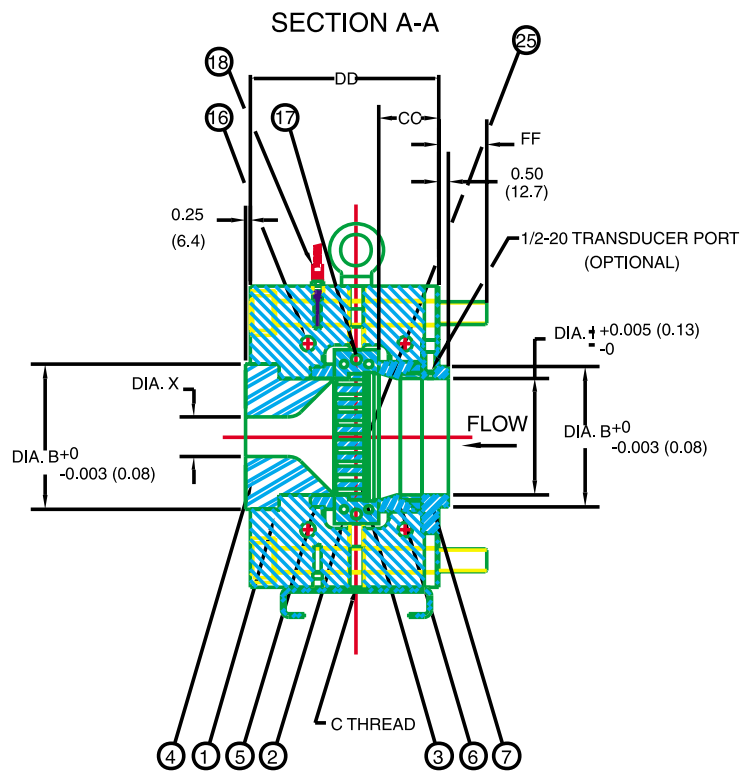
**Dynisco EH HYDRAULIC SCREEN CHANGER**

**Dimensions  
(inches, mm)**



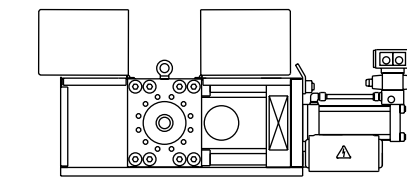
MODEL SIZE	EH-25	EH-35	EH-45	EH-60
HEATER KW (body)	2.6 KW	3.8 KW	5.6 KW	8.0 KW
HEATER KW (slideplate)	.6KW*	1.0 KW*	1.6 KW*	1.6 KW
TOTAL HEATER KW	3.2 KW	4.8 KW	7.2 KW	9.6 KW
SCREEN DIA. "A"	Inches	2 <sup>7</sup> / <sub>8</sub>	3 <sup>15</sup> / <sub>16</sub>	5 <sup>3</sup> / <sub>16</sub>
	mm	73	100	132

B	Inches	3.498	4.498	5.498	7.498
	mm	88.85	114.25	139.65	190.45
C		M12x1.75	M16x2	M16x2	M20x2.5
CC	Inches	2.69	2.56	2.75	3.13
	mm	68.3	65.2	69.9	79.4
DD	Inches	6.75	7.25	8.38	9.75
	mm	171.5	184.2	212.9	247.7
FF	Inches	2.00	1.59	2.29	2.47
	mm	50.8	40.4	58.2	62.7
GG	Inches	6.63	8.50	10.25	12.75
	mm	168.4	215.9	260.4	323.9
H	Inches	37.44	45.44	53.95	64.19
	mm	951.0	1154.2	1370.3	1630.4
I	Inches	2.510	3.550	4.735	6.010
	mm	63.75	90.17	120.27	152.65
J	Inches	26.75	32.25	38.25	44.75
	mm	679.5	819.2	971.6	1136.7
K	Inches	13.78	17.48	21.27	25.88
	mm	350.0	444.0	540.3	657.4
L	Inches	11.38	11.87	12.12	12.88
	mm	289.1	301.5	307.8	327.2
M	Inches	5.05	6.48	7.37	8.62
	mm	128.3	164.6	187.2	218.9
N	Inches	11.42	14.14	16.88	20.62
	mm	290.1	359.2	428.8	523.7
Q	Inches	5.82	6.94	8.06	9.32
	mm	147.8	176.3	204.7	236.7
R		M16x2x25.4	M20x2.5x32	M24x3x38.1	M24x3x45
S		8	8	8	12
U	Inches	5.000	6.000	7.500	9.500
	mm	127.0	152.4	190.5	241.3
V		M20x2.5	M24x3	M30x3.5	M30x3.5
W		4	4	4	8
X	Inches	1.250	1.250	1.250	1.750
	mm	31.75	31.75	31.75	44.45
	Inches	1.500	1.500	1.500	2.000
Y	mm	38.1	38.1	38.1	50.8
	Inches	N/A	N/A	N/A	5.25
Z	mm	N/A	N/A	N/A	133.40
	Inches	5.00	6.50	7.75	10.25
	mm	127.0	165.1	196.9	260.4

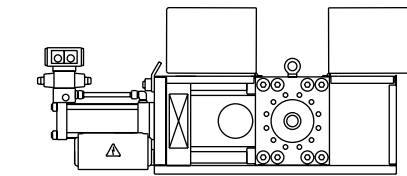


ITEM	DESCRIPTION	QTY.
1	BODY	1
2	SLIDE PLATE	1
3	BREAKER PLATE	2
4	DOWNSTREAM BUSHING	1
5	DOWNSTREAM SEAL	1
6	UPSTREAM SEAL ASSEMBLY	1
7	CONNECTOR RING	1
10	TIE BAR	2
11	STUD	2
12	CYLINDER FLANGE	1
13	HYDRAULIC CYLINDER	1
14	VALVE	1
15	CLEVIS	1
16	CARTRIDGE HEATER BODY	4
17	CARTRIDGE HEATER, SLIDE PLATE	2
18	THERMOCOUPLE	1
19	GUARD, RIGHT HAND	1
20	GUARD, LEFT HAND	1
21	CLEVIS GUARD	2
22	TRAY	1
23	END COVER	1
24	GUARD INTERLOCK SWITCH	2
25	SCREEN PACK, DIA. "A"	A/R
26	OPERATOR CONTROL STATION	1
27	COVER, FREE SIDE	1
28	COVER, CYLINDER SIDE	1
29	JUNCTION BOX	1

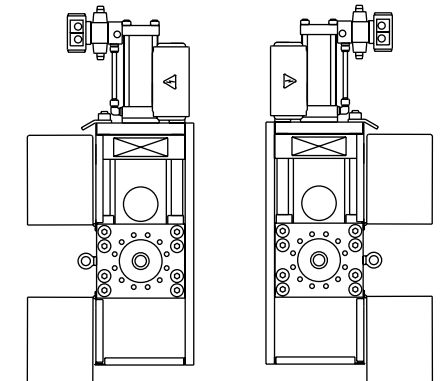
**Mounting Arrangement**



Horizontal Standard

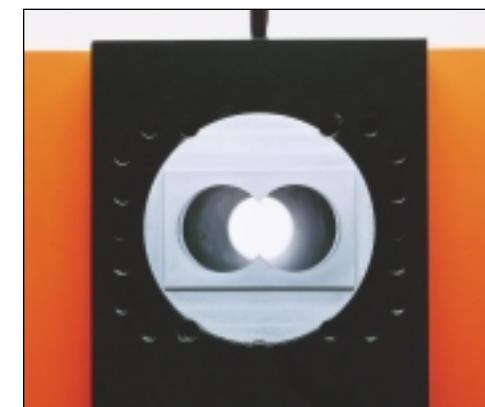


Horizontal Opposite



Vertical Standard

Vertical Opposite

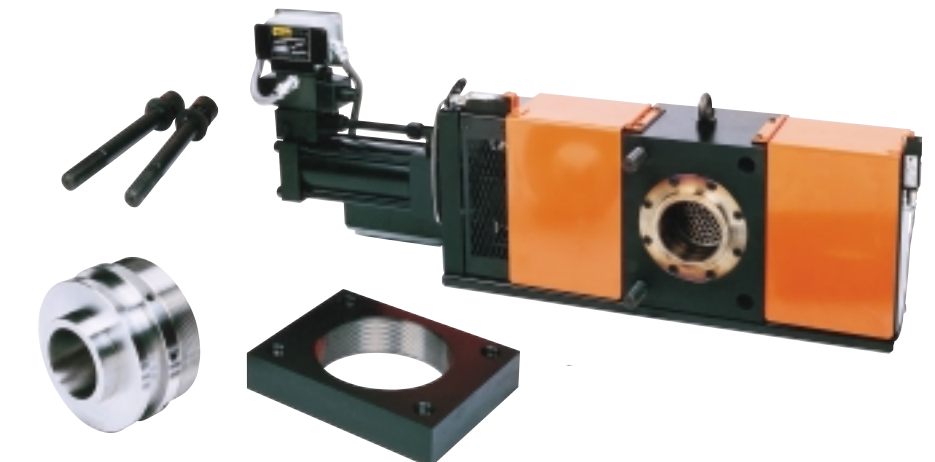


Twin Screw  
8 to 0 (optional)  
Built into body

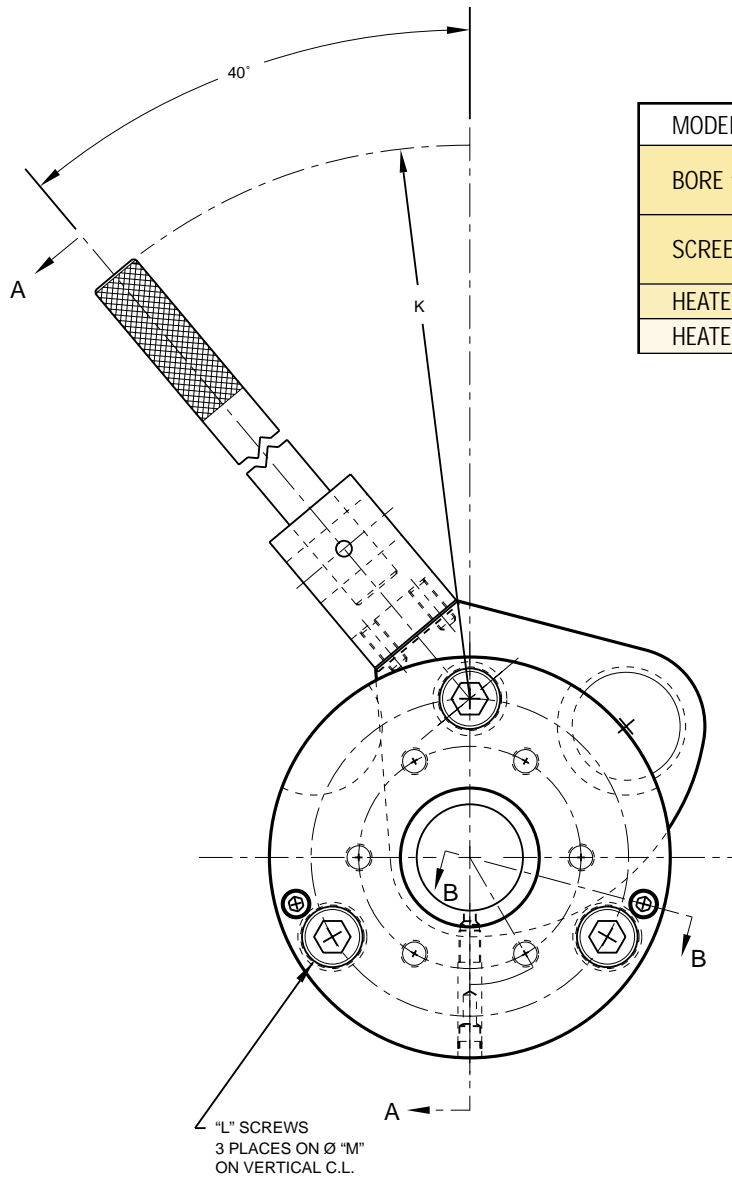


**Compact Hydraulic Unit**  
eliminates piston wear with  
vertical accumulator ... includes  
status indicator lights and easy to  
read operating instructions.

Extruder Interface Options  
(Bolt through standard)



\*Slideplate heat optional in these units. All vertical mounted screen changers have sideplate heat.

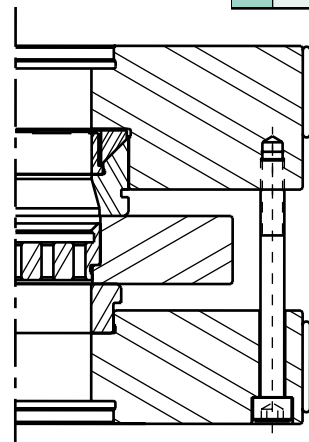


MODEL SIZE		EM-10	EM-15	EM-20	EM-25	EM-35	EM-45
BORE "A"	Inches	1.010	1.510	2.010	2.510	3.555	4.735
	mm	25.65	38.35	51.05	63.75	90.30	120.27
SCREEN DIA.	Inches	1 1/16	1 3/16	2 1/16	2 3/16	3 1/16	4 13/16
	mm	26.99	39.69	52.39	65.09	90.49	122.24
HEATER KW		0.6 KW	0.9 KW	1.2 KW	1.8 KW	3.0 KW	4.8 KW
HEATER VOLT		230 V	230 V	230 V	230 V	230 V	230 V
B	Inches	1.500	2.000	2.500	3.250	4.250	5.500
	mm	38.10	50.80	63.50	82.55	107.95	139.70
C	Inches	2.13	2.19	2.25	2.81	3.31	4.38
	mm	54.10	55.63	57.15	71.37	84.07	111.25
D		M10	M12	M16	M16	M24	M30
E	Inches	0.79	0.94	1.26	1.26	1.89	2.36
	mm	20.07	23.88	32.00	32.00	48.00	59.94
F	Inches	3.000	3.500	4.500	5.250	6.500	8.000
	mm	76.20	88.90	114.30	133.35	165.10	203.20
G	Inches	0.25	0.25	0.25	0.38	0.50	0.50
	mm	6.35	6.35	6.35	9.65	12.70	12.70
H	Inches	5.50	6.75	8.00	9.50	12.50	15.00
	mm	139.70	171.45	203.20	241.30	317.50	381.00
J	Inches	4.25	4.75	5.25	6.25	7.50	10.00
	mm	107.95	120.65	133.35	158.75	190.50	254.00
K	Inches	16.25	17.50	18.00	22.38	22.75	27.50
	mm	412.75	444.50	457.20	568.45	577.85	698.50
L		M12	M16	M20	M24	M30	M36
M	Inches	4.250	5.500	6.500	7.500	10.000	12.000
	mm	107.85	139.70	165.10	190.50	254.00	304.80
N	Inches	0.96	1.27	1.47	1.81	2.37	2.51
	mm	24.38	32.26	37.34	45.97	60.20	63.75
P	Inches	1.38	1.69	2.00	2.31	2.82	3.88
	mm	35.05	42.93	50.80	58.67	71.63	98.55
Q	Inches	0.62	0.56	.052	0.90	1.06	1.50
	mm	15.75	14.22	13.21	22.86	26.92	38.10

EH-EM Seals



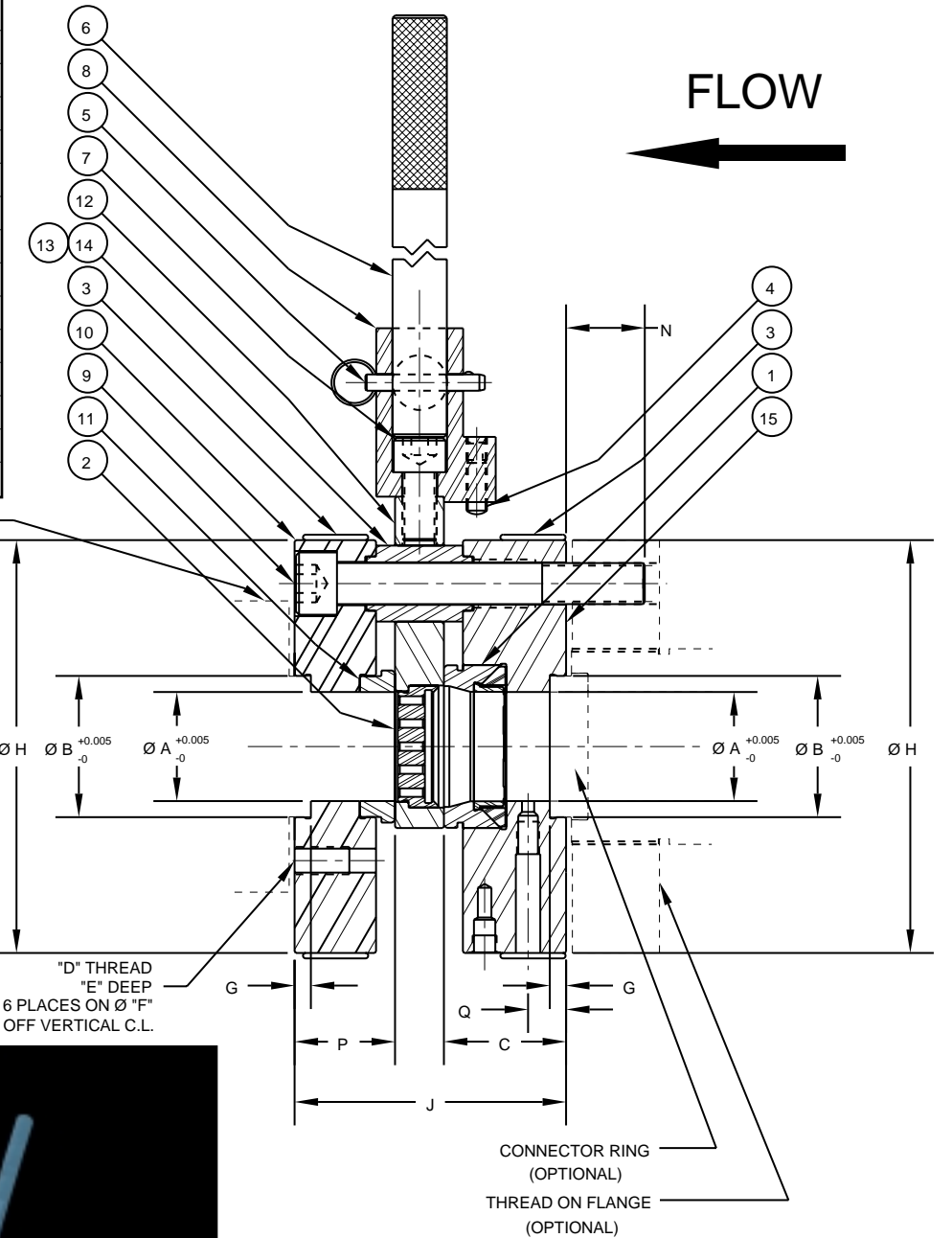
High Temp (>540°F) Standard Seal Assembly



SECTION B-B

## Standard "EM" Configuration

ITEM	DESCRIPTION	QTY.
1	UPSTREAM SEAL ASSEMBLY	1
2	BREAKER PLATE	2
3	BAND HEATER	2
4	ALIGNMENT SCREW	2
5	QUICK RELEASE PIN	1
6	HANDLE	1
7	HANDLE SCREW	1
8	HANDLE ADAPTER	1
9	BODY SCREW	3
10	DOWNSTREAM BODY	1
11	DOWNSTREAM SEAL	1
12	SLIDE PLATE	1
13	BODY SPACER	2
14	PIVOT SPACER	1
15	UPSTREAM BODY	1



SECTION A-A

